

13419 MARINE DRIVE

GLENN DENNIS

GROUP

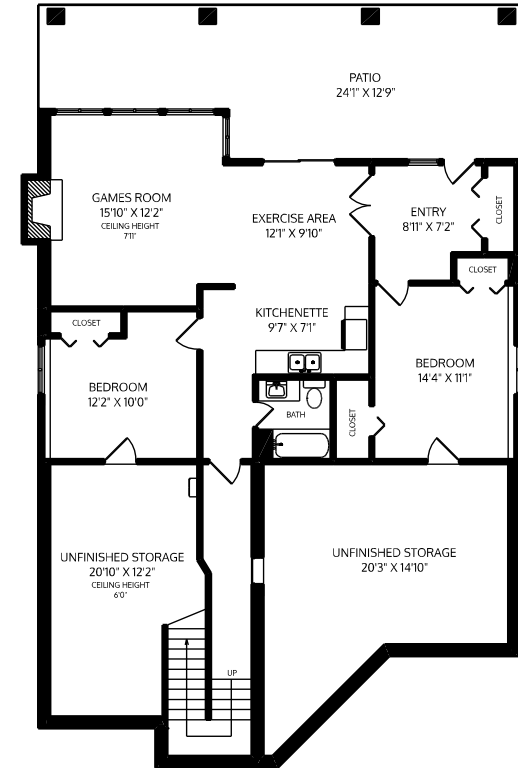
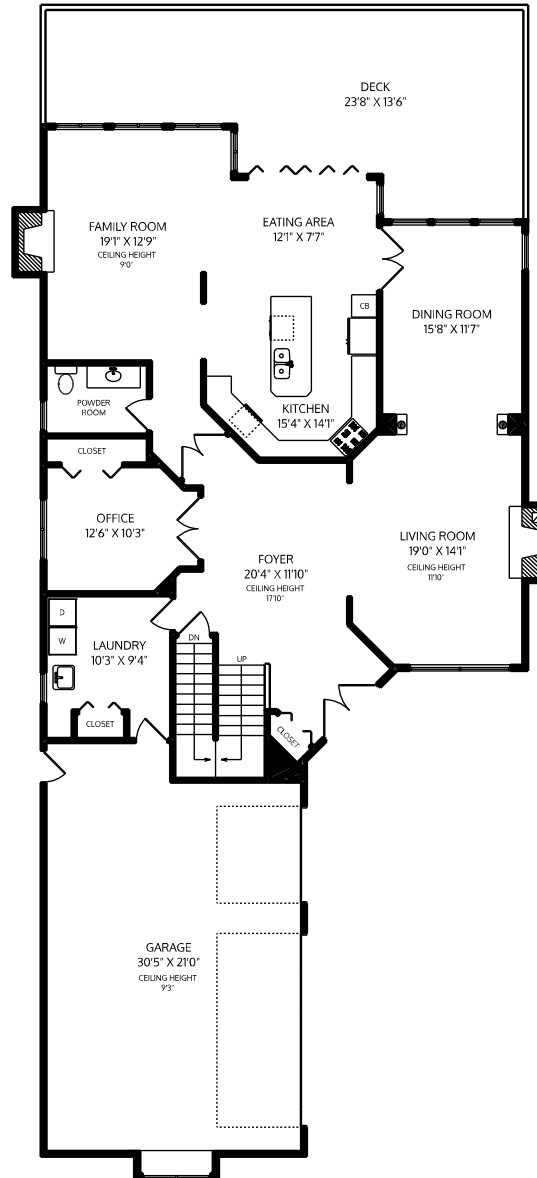
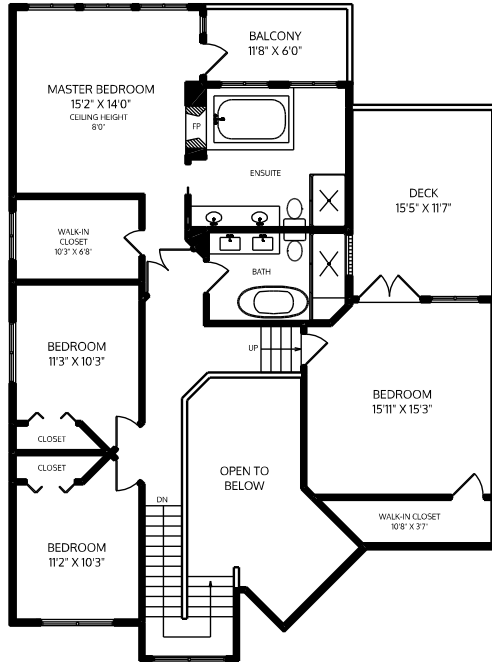
www.glenndennis.com | 604.737.8865

FLOOR	FINISHED	UNFINISHED	TOTAL	OTHER AREAS	
MAIN	1875	0	1875	DECKS	730
UPPER	1445	0	1445	PATIO	443
LOWER	1241	655	1896	BALCONY	78
TOTAL	4561	655	5216	GARAGE	729

MAIN FLOOR

LOWER FLOOR

UPPER FLOOR



Document prepared for the exclusive use of Glenn Dennis* & Wenning Cai* *PERSONAL REAL ESTATE CORPORATION

These floor plans are not suitable for construction purposes. Efforts have been made to represent dimensions accurately. Purchaser of the property to verify measurements if important. E&O Insured.



MEASURED 08/26/2020